

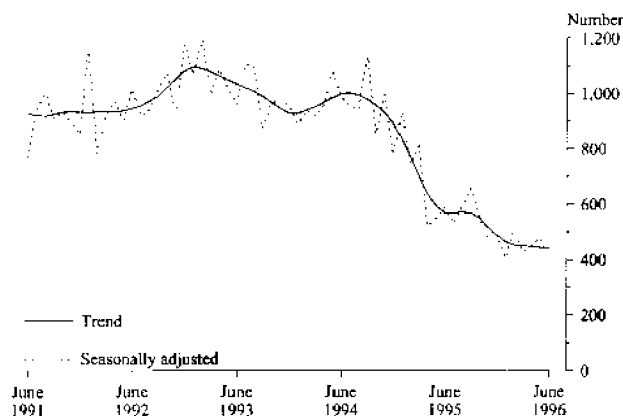
## BUILDING APPROVALS, SOUTH AUSTRALIA, JUNE 1996

### MAIN FEATURES

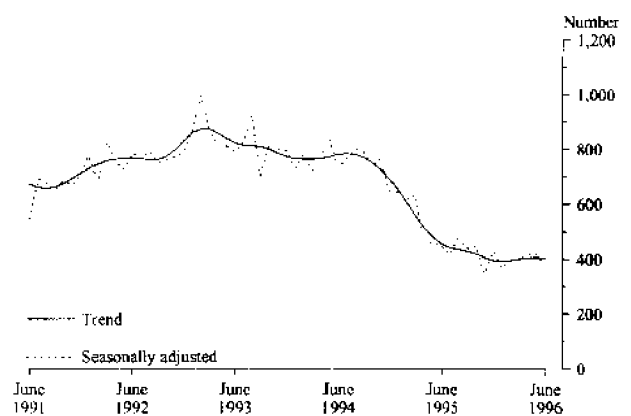
#### NUMBER OF DWELLING UNITS APPROVED

	June 1995	May 1996	June 1996	June 1995 to June 1996 change	May 1996 to June 1996 change
Original series	646	505	436	-32.5%	-13.7%
Seasonally adjusted	590	479	408	-30.8%	14.8%
Trend estimate	570	445	440	-22.8%	-1.1%

TOTAL DWELLING UNITS APPROVED



PRIVATE HOUSES APPROVED



#### Residential building

- The trend for the total number of dwelling units approved in June resumed its downward movement falling 1.2%.
- The trend for the number of private sector houses approved has also ceased the upward movement indicated last month and has now flattened out.
- The original (unadjusted) number of dwelling units approved was 436. Of the total 403 were private sector houses.
- For the year ended June 1996 there were 5,968 dwelling units approved, 38.9% less than the 9,762 approved in the previous year.

- The value of new residential building approved fell 15.9% from \$40.8 million in May to \$34.3 million this month. The value of alterations and additions to residential buildings was \$10.5 million.

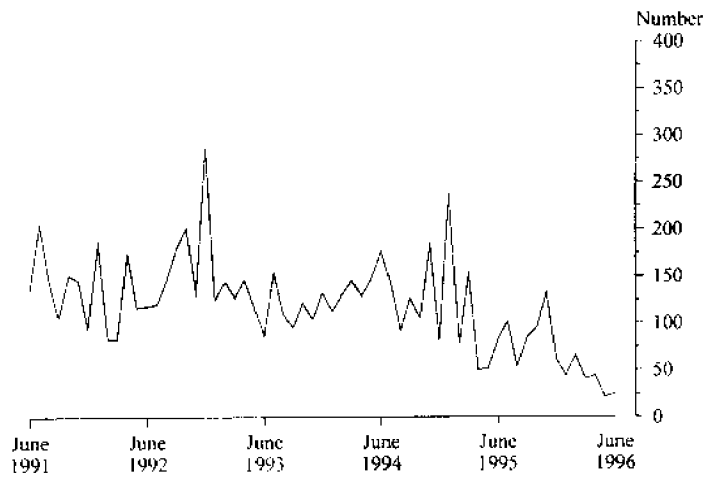
#### Non-residential building

- The value of non-residential projects approved in June was \$26.9 million. There were 5 projects in the \$1 million to \$5 million category. Of the total, other business premises work accounted for \$9.2 million and shops \$4.7 million.

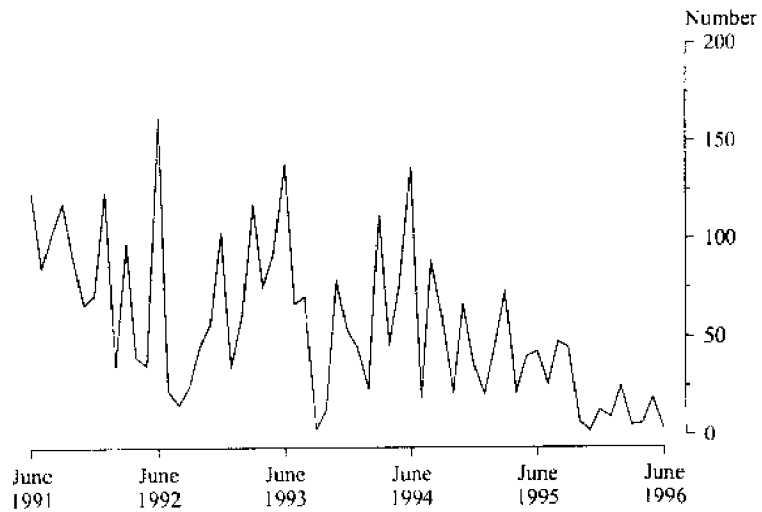
#### INQUIRIES

- for more information about statistics in this publication and the availability of related unpublished statistics, contact Damian Sparkes on Adelaide (08) 237 7590 or any ABS State Office.
- for information about other ABS statistics and services please refer to the back of this publication.

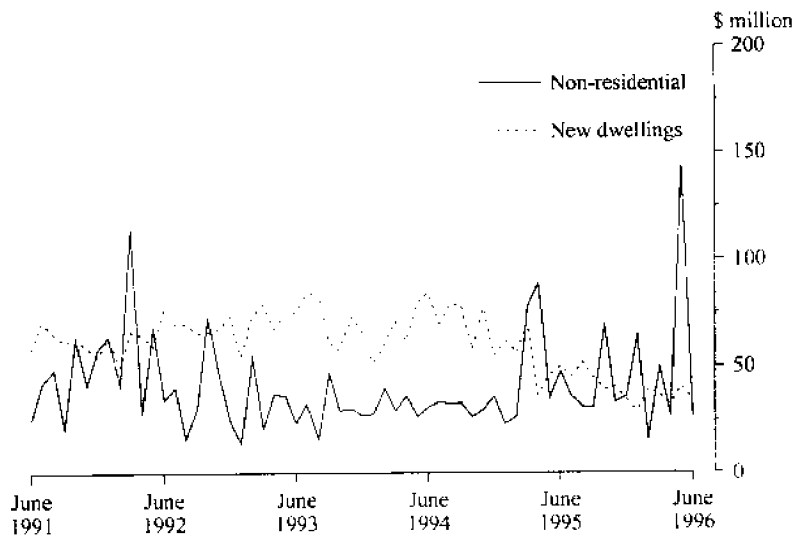
**NEW OTHER RESIDENTIAL BUILDINGS APPROVED  
PRIVATE SECTOR**



**TOTAL DWELLING UNITS APPROVED  
PUBLIC SECTOR**



**VALUE OF BUILDING WORK APPROVED**



## RELIABILITY OF CONTEMPORARY TREND ESTIMATES

The tables below present trend estimates of selected building approvals series for the six months January 1996 to June 1996.

Analysis of building approvals series has shown that the original series can be volatile and that the initial estimates of a month's trend value can be revised substantially. In particular, some months can elapse before a turning point in the trend series is identified reliably. Generally, the size of revisions to the trend estimates tends to be larger, the greater the volatility of the original series. Revisions to trend estimates will also occur with revisions to original data and re-estimation of seasonal adjustment factors. See paragraphs 21 to 23 of the Explanatory Notes for more information.

To illustrate the possible impact of future months observations on the trend estimates for the latest months, the tables below show the revisions to the trend estimates which would result if the movements in the seasonally adjusted estimates for next month (July 1996) were to equal the average absolute monthly percentage change in the series over the last ten years.

For example, if the seasonally adjusted estimate for the number of private sector houses approved (the first table below) were to increase by 10% in July 1996, the trend estimate for that month would be 411, a movement of 0.8%. The movements in the trend estimates for April, May and June which are currently estimated to be 0.8%, 0.5% and -0.8% respectively, would be revised to 1.2%, 0.6% and 0.1%. On the other hand, a 10% seasonally adjusted decline in the number of private sector houses approved in July 1996 would produce a trend estimate for July of 381, a movement of -1.8%, with the movements in the trend estimates for April, May and June being revised to 0.0%, -1.3% and -2.3% respectively.

### NUMBER OF PRIVATE SECTOR HOUSES APPROVED RELIABILITY OF TREND ESTIMATES

	Trend estimate		Revised trend estimate if July 1996 seasonally adjusted estimate			
			is up 10% on June 1996		is down 10% on June 1996	
	No.	% change on previous month	No.	% change on previous month	No.	% change on previous month
1996—						
January	393	-0.8	392	-1.0	394	-0.6
February	396	0.7	395	0.6	397	0.9
March	401	1.3	400	1.5	402	1.1
April	404	0.8	405	1.2	402	0.0
May	406	0.5	407	0.6	397	-1.3
June	403	0.8	408	0.1	388	2.3
July	n.y.a.	n.y.a.	411	0.8	381	-1.8

### TOTAL NUMBER OF DWELLING UNITS APPROVED RELIABILITY OF TREND ESTIMATES

	Trend estimate		Revised trend estimate if July 1996 seasonally adjusted estimate			
			is up 11% on June 1996		is down 11% on June 1996	
	No.	% change on previous month	No.	% change on previous month	No.	% change on previous month
1996—						
January	464	-4.6	463	-4.8	465	-4.4
February	454	-2.3	452	-2.5	455	-2.2
March	452	0.5	451	-0.2	452	0.6
April	449	-0.6	451	-0.1	447	-1.3
May	445	-0.9	448	-0.6	435	-2.7
June	440	-1.2	445	-0.7	420	-3.5
July	n.y.a.	n.y.a.	445	-0.1	406	3.1

TABLE 1. DWELLING UNITS APPROVED

Period	New houses			New other residential buildings			Conversions, etc.	Total (a)		
	Private sector	Public sector	Total	Private sector	Public sector	Total		Private sector	Public sector	Total
<b>ADELAIDE STATISTICAL DIVISION</b>										
1993-94	6,587	401	6,988	1,342	286	1,628	15	7,944	687	8,631
1994-95	5,256	384	5,640	1,213	120	1,333	59	6,515	517	7,032
1995-96	3,029	177	3,206	646	29	675	46	3,721	206	3,927
<i>1995—</i>										
April	264	22	286	40	—	40	5	309	22	331
May	329	28	357	45	6	51	3	377	34	411
June	330	41	371	72	2	74	—	402	43	445
July	284	18	302	92	8	100	3	379	26	405
August	353	44	397	33	4	37	4	390	48	438
September	275	30	305	74	15	89	24	373	45	418
October	263	7	270	90	—	90	—	353	7	360
November	212	2	214	110	—	110	—	322	2	324
December	202	12	214	51	—	51	5	258	12	270
<i>1996—</i>										
January	197	7	204	42	2	44	1	240	9	249
February	243	25	268	50	—	50	1	294	25	319
March	224	5	229	31	—	31	3	258	5	263
April	230	6	236	37	—	37	—	267	6	273
May	305	18	323	17	—	17	—	322	18	340
June	241	3	244	19	—	19	5	265	3	268
<b>SOUTH AUSTRALIA</b>										
1993-94	9,470	431	9,901	1,559	299	1,858	18	11,046	731	11,777
1994-95	7,757	390	8,147	1,387	151	1,538	77	9,208	554	9,762
1995-96	4,930	179	5,109	773	29	802	57	5,760	208	5,968
<i>1995—</i>										
April	403	22	425	50	—	50	6	459	22	481
May	493	30	523	52	10	62	4	549	40	589
June	513	41	554	83	2	85	7	603	43	646
July	445	18	463	102	8	110	3	550	26	576
August	564	44	608	54	4	58	5	623	48	671
September	437	30	467	85	15	100	25	547	45	592
October	415	7	422	96	—	96	1	512	7	519
November	388	2	390	133	—	133	4	525	2	527
December	354	13	367	61	—	61	6	421	13	434
<i>1996—</i>										
January	299	7	306	44	2	46	3	346	9	355
February	393	25	418	66	—	66	2	461	25	486
March	388	5	393	41	—	41	3	432	5	437
April	380	6	386	44	—	44	—	424	6	430
May	464	19	483	22	—	22	—	486	19	505
June	403	3	406	25	—	25	5	433	3	436

(a) Includes Conversions, etc. See paragraphs 10-12 of the Explanatory Notes.

**TABLE 2. VALUE OF BUILDING APPROVED**  
(*\$ million*)

Period	New residential building									Alterations and additions to residential buildings	Non-residential building		Total building	
	Houses			Other residential buildings			Total				Private sector	Total	Private sector	Total
	Private sector	Public sector	Total	Private sector	Public sector	Total	Private sector	Public sector	Total					
<b>ADELAIDE STATISTICAL DIVISION</b>														
1993-94	494.3	25.7	520.0	86.3	17.0	103.3	580.6	42.7	623.3	98.7	167.2	314.2	846.0	1,036.2
1994-95	420.2	26.7	446.9	87.7	6.9	94.6	508.0	33.5	541.5	95.0	181.2	393.1	782.5	1,029.5
1995-96	254.6	13.2	267.7	46.3	1.9	48.2	300.9	15.1	315.9	93.3	303.4	445.7	696.9	854.9
1995—														
April	22.1	1.5	23.6	2.4	—	2.4	24.5	1.5	25.9	4.9	17.1	80.1	46.5	110.9
May	27.8	2.0	29.8	2.9	0.3	3.2	30.7	2.3	33.0	7.0	16.3	26.1	53.8	66.1
June	27.3	3.1	30.4	4.9	0.1	5.0	32.2	3.2	35.4	6.8	29.0	34.1	67.6	76.2
July	24.0	1.1	25.1	6.4	0.4	6.8	30.4	1.5	31.9	7.7	21.0	29.0	59.1	68.6
August	29.4	3.0	32.4	2.2	0.3	2.5	31.6	3.3	34.9	8.9	14.0	26.2	54.4	70.1
September	23.8	2.7	26.5	5.1	1.1	6.2	28.9	3.8	32.7	9.4	19.5	27.7	57.8	69.8
October	22.7	0.6	23.4	4.1	—	4.1	26.8	0.6	27.4	8.3	33.7	62.8	68.6	98.4
November	18.4	0.1	18.5	8.1	—	8.1	26.5	0.1	26.6	7.6	8.3	26.8	42.4	61.0
December	17.7	0.8	18.5	3.7	—	3.7	21.3	0.8	22.2	6.5	9.4	20.7	37.3	49.4
1996—														
January	16.9	0.5	17.4	3.2	0.1	3.4	20.1	0.6	20.8	7.1	19.8	28.0	47.0	55.9
February	19.2	1.8	21.0	5.9	—	5.9	25.0	1.8	26.8	6.4	9.4	14.5	40.7	47.7
March	19.6	0.5	20.1	3.6	—	3.6	23.2	0.5	23.7	8.9	11.7	33.2	43.7	65.7
April	18.2	0.4	18.6	1.9	—	1.9	20.1	0.4	20.6	6.8	14.3	23.2	41.2	50.5
May	24.3	1.3	25.7	1.1	—	1.1	25.4	1.3	26.7	8.1	132.7	136.9	166.1	171.7
June	20.3	0.2	20.5	1.1	—	1.1	21.5	0.2	21.6	7.6	9.7	16.7	38.6	46.0
<b>SOUTH AUSTRALIA</b>														
1993-94	695.1	27.5	722.6	98.5	17.8	116.3	793.6	45.3	838.9	122.2	208.4	375.2	1,122.8	1,336.3
1994-95	605.8	27.0	632.8	98.4	8.5	106.9	704.2	35.5	739.7	119.9	244.7	493.2	1,065.4	1,352.8
1995-96	399.4	13.3	412.7	54.6	1.9	56.6	454.1	15.3	469.3	119.1	393.0	566.2	964.3	1,154.6
1995—														
April	32.1	1.5	33.6	2.8	—	2.8	34.9	1.5	36.4	6.6	25.4	89.3	66.8	132.2
May	40.4	2.1	42.5	3.2	0.6	3.8	43.6	2.7	46.3	9.3	20.2	35.4	72.8	91.0
June	41.3	3.1	44.4	5.6	0.1	5.7	46.9	3.2	50.1	9.2	35.9	47.9	91.6	107.2
July	36.7	1.1	37.9	7.0	0.4	7.4	43.7	1.5	45.2	9.0	25.0	36.3	77.8	90.6
August	45.5	3.0	48.5	3.4	0.3	3.8	48.9	3.3	52.3	11.2	18.2	31.5	78.2	94.9
September	35.6	2.7	38.2	5.7	1.1	6.8	41.3	3.8	45.0	12.1	22.3	31.1	75.7	88.2
October	33.9	0.6	34.6	4.6	—	4.6	38.5	0.6	39.2	10.4	37.5	69.2	86.3	118.8
November	31.3	0.1	31.4	9.5	—	9.5	40.7	0.1	40.8	10.3	11.8	33.1	62.9	84.2
December	29.1	1.0	30.1	4.4	—	4.4	33.5	1.0	34.5	8.9	13.4	36.1	55.6	79.5
1996—														
January	25.2	0.5	25.7	3.3	0.1	3.5	28.6	0.6	29.2	8.5	55.3	64.4	92.3	102.1
February	30.9	1.8	32.7	6.9	—	6.9	37.8	1.8	39.6	8.4	11.3	16.5	57.2	64.5
March	31.7	0.5	32.2	4.4	—	4.4	36.0	0.5	36.5	11.4	26.6	49.9	73.9	97.8
April	29.3	0.4	29.7	2.2	—	2.2	31.5	0.4	31.9	8.5	17.6	27.5	57.5	67.9
May	37.6	1.4	38.9	1.8	—	1.8	39.4	1.4	40.8	10.0	136.3	143.6	185.6	194.3
June	32.7	0.2	32.9	1.4	—	1.4	34.1	0.2	34.3	10.5	17.7	26.9	61.2	71.8

**TABLE 3. NUMBER OF DWELLING UNITS (a) APPROVED  
SEASONALLY ADJUSTED AND TREND ESTIMATES (b)**

Period	Houses				Total			
	Private sector		Total		Private sector		Total	
	Seasonally adjusted	Trend estimate	Seasonally adjusted	Trend estimate	Seasonally adjusted	Trend estimate	Seasonally adjusted	Trend estimate
	<i>1995—</i>							
April	460	516	469	543	507	609	523	637
May	463	480	477	505	521	561	552	591
June	449	456	499	483	540	535	590	570
July	416	441	427	473	515	528	532	569
August	475	435	502	467	540	533	588	574
September	437	429	520	459	583	532	659	569
October	448	419	451	444	542	520	551	550
November	347	406	347	425	472	496	475	517
December	429	396	443	410	466	472	492	487
<i>1996—</i>								
January	367	393	366	403	422	455	407	464
February	398	396	446	405	452	446	504	454
March	402	401	390	410	454	443	430	452
April	418	404	411	412	447	442	452	449
May	419	406	441	412	450	439	479	445
June	382	403	380	406	418	436	408	440

(a) Includes Conversions, etc. See paragraphs 10-12 of the Explanatory Notes. (b) See paragraphs 16-23 of the Explanatory Notes.

**TABLE 4. VALUE OF BUILDING APPROVED AT AVERAGE 1989-90 PRICES (a)  
(\$ million)**

Period	New residential building				Alterations and additions to residential buildings	Non-residential building		Total building	
	Houses		Other residential buildings	Total		Private sector	Total	Private sector	Total
	Private sector	Total							
1992-93	652.7	673.8	119.1	793.0	125.1	163.6	393.3	1,038.5	1,311.3
1993-94	628.9	653.6	107.5	761.1	110.4	194.0	348.9	1,023.9	1,220.5
1994-95	527.5	551.0	97.3	648.3	104.4	224.5	452.5	944.9	1,205.2
<i>1994—</i>									
Dec. qtr.	137.1	141.7	24.5	166.3	26.3	53.3	85.7	239.6	278.3
<i>1995—</i>									
Mar. qtr.	120.4	128.6	35.7	164.3	24.2	39.9	117.7	219.1	306.2
June qtr.	98.6	104.4	11.1	115.5	21.7	74.4	157.5	205.0	294.7
Sept. qtr.	101.9	107.8	16.0	123.8	27.9	59.6	90.0	204.3	241.8
Dec. qtr.	82.6	84.1	16.4	100.4	26.0	56.8	125.5	181.9	251.9
<i>1996—</i>									
Mar. qtr.	77.2	79.7	13.0	92.7	24.8	84.2	118.3	199.4	235.8

(a) See paragraphs 24 to 26 of the Explanatory Notes. Constant price estimates are subject to revision each quarter as more up to date information on prices and commodity compositions becomes available.

**TABLE 5. VALUE OF BUILDING APPROVED, BY CLASS OF BUILDING AND OWNERSHIP**  
(**\$ million**)

Class of building	1993-94	1994-95	1995-96	1996			
				March	April	May	June
<b>PRIVATE SECTOR</b>							
New houses	695.1	605.8	399.4	31.7	29.3	37.6	32.7
New other residential buildings	98.5	98.4	54.6	4.4	2.2	1.8	1.4
<i>Total new residential building</i>	<i>793.6</i>	<i>704.2</i>	<i>454.1</i>	<i>36.0</i>	<i>31.5</i>	<i>39.4</i>	<i>34.1</i>
Alterations and additions to residential buildings	120.7	116.6	117.2	11.4	8.5	9.9	9.3
Hotels, etc.	5.0	4.2	18.2	7.3	0.2	0.3	0.1
Shops	40.8	51.3	122.0	1.5	2.7	87.3	4.7
Factories	18.2	25.0	26.2	2.9	0.8	1.2	2.4
Offices	39.1	34.3	53.3	5.6	4.4	6.8	1.1
Other business premises	24.8	59.2	77.8	2.0	3.0	29.8	5.1
Educational	18.2	17.3	17.2	1.3	1.4	0.4	1.4
Religious	1.9	3.0	3.7	0.2	0.2	0.2	1.0
Health	26.9	26.5	41.9	0.6	3.5	0.3	0.1
Entertainment and recreational	15.9	9.7	23.2	5.0	0.9	7.2	0.9
Miscellaneous	17.6	14.0	9.6	0.3	0.5	2.9	1.0
<i>Total non-residential building</i>	<i>208.4</i>	<i>244.7</i>	<i>393.0</i>	<i>26.6</i>	<i>17.6</i>	<i>136.3</i>	<i>17.7</i>
<b>Total</b>	<b>1,122.8</b>	<b>1,065.4</b>	<b>964.3</b>	<b>73.9</b>	<b>57.5</b>	<b>185.6</b>	<b>61.2</b>
<b>PUBLIC SECTOR</b>							
New houses	27.5	27.0	13.3	0.5	0.4	1.4	0.2
New other residential buildings	17.8	8.5	1.9	—	—	—	—
<i>Total new residential building</i>	<i>45.3</i>	<i>35.5</i>	<i>15.3</i>	<i>0.5</i>	<i>0.4</i>	<i>1.4</i>	<i>0.2</i>
Alterations and additions to residential buildings	1.5	3.3	1.9	—	—	—	1.2
Hotels, etc.	0.9	0.4	—	—	—	—	—
Shops	3.0	3.1	7.9	0.4	5.3	1.7	—
Factories	3.2	5.5	6.7	—	—	0.7	—
Offices	25.0	92.5	43.5	12.0	2.8	0.2	1.3
Other business premises	7.0	13.2	17.8	6.8	—	—	4.0
Educational	100.2	92.5	42.5	3.2	0.9	3.0	1.4
Religious	—	—	1.0	—	—	1.0	—
Health	9.5	16.0	10.2	—	0.8	0.5	1.8
Entertainment and recreational	4.4	9.7	3.6	0.9	0.1	—	0.5
Miscellaneous	13.6	15.5	40.0	—	—	0.3	0.3
<i>Total non-residential building</i>	<i>166.8</i>	<i>248.6</i>	<i>173.2</i>	<i>23.3</i>	<i>9.9</i>	<i>7.3</i>	<i>9.2</i>
<b>Total</b>	<b>213.5</b>	<b>287.4</b>	<b>190.4</b>	<b>23.8</b>	<b>10.3</b>	<b>8.7</b>	<b>10.6</b>
<b>TOTAL</b>							
New houses	722.6	632.8	412.7	32.2	29.7	38.9	32.9
New other residential buildings	116.3	106.9	56.6	4.4	2.2	1.8	1.4
<i>Total new residential building</i>	<i>838.9</i>	<i>739.7</i>	<i>469.3</i>	<i>36.5</i>	<i>31.9</i>	<i>40.8</i>	<i>34.3</i>
Alterations and additions to residential buildings	122.2	119.9	119.1	11.4	8.5	10.0	10.5
Hotels, etc.	5.9	4.7	18.2	7.3	0.2	0.3	0.1
Shops	43.8	54.4	129.9	1.9	8.0	89.0	4.7
Factories	21.3	30.6	32.9	2.9	0.8	1.9	2.4
Offices	64.1	126.8	96.8	17.6	7.1	7.0	2.4
Other business premises	31.8	72.4	95.5	8.8	3.0	29.8	9.2
Educational	118.4	109.7	59.7	4.5	2.4	3.3	2.8
Religious	1.9	3.0	4.7	0.2	0.2	1.2	1.0
Health	36.4	42.6	52.1	0.6	4.3	0.8	1.8
Entertainment and recreational	20.4	19.4	26.8	5.9	1.0	7.2	1.4
Miscellaneous	31.2	29.6	49.6	0.3	0.5	3.2	1.2
<i>Total non-residential building</i>	<i>375.2</i>	<i>493.2</i>	<i>566.2</i>	<i>49.9</i>	<i>27.5</i>	<i>143.6</i>	<i>26.9</i>
<b>Total</b>	<b>1,336.3</b>	<b>1,352.8</b>	<b>1,154.6</b>	<b>97.8</b>	<b>67.9</b>	<b>194.3</b>	<b>71.8</b>

**TABLE 6. NON-RESIDENTIAL BUILDING JOBS APPROVED, BY CLASS OF BUILDING AND VALUE SIZE GROUPS**

Period	\$50,000 to less than \$200,000		\$200,000 to less than \$500,000		\$500,000 to less than \$1m		\$1m to less than \$5m		\$5m and over		Total	
	No.	Value (\$m)	No.	Value (\$m)	No.	Value (\$m)	No.	Value (\$m)	No.	Value (\$m)	No.	Value (\$m)
<b>HOTELS, ETC.</b>												
1996 April	2	0.2	—	—	—	—	—	—	—	—	2	0.2
May	—	—	1	0.3	—	—	—	—	—	—	1	0.3
June	1	0.1	—	—	—	—	—	—	—	—	1	0.1
<b>SHOPS</b>												
1996 April	4	0.4	1	0.4	2	1.7	3	5.5	—	—	10	8.0
May	24	2.5	5	1.6	3	2.6	1	1.2	1	81.0	34	89.0
June	14	1.2	4	1.5	3	2.0	—	—	—	—	21	4.7
<b>FACTORIES</b>												
1996 April	3	0.2	2	0.6	—	—	—	—	—	—	5	0.8
May	6	0.5	2	0.7	1	0.7	—	—	—	—	9	1.9
June	4	0.4	2	0.8	—	—	1	1.3	—	—	7	2.4
<b>OFFICES</b>												
1996 April	10	0.9	5	1.2	4	2.2	2	2.8	—	—	21	7.1
May	8	0.9	2	0.5	1	0.6	—	—	1	5.0	12	7.0
June	10	0.9	3	1.0	1	0.5	—	—	—	—	14	2.4
<b>OTHER BUSINESS PREMISES</b>												
1996 April	10	1.1	2	0.4	—	—	1	1.5	—	—	13	3.0
May	8	0.7	1	0.3	2	1.4	—	—	2	27.5	13	29.8
June	11	1.1	5	1.4	1	0.5	3	6.2	—	—	20	9.2
<b>EDUCATIONAL</b>												
1996 April	2	0.1	8	2.2	—	—	—	—	—	—	10	2.4
May	1	0.1	1	0.4	1	0.6	2	2.3	—	—	5	3.3
June	3	0.3	5	1.8	1	0.7	—	—	—	—	9	2.8
<b>RELIGIOUS</b>												
1996 April	—	—	1	0.2	—	—	—	—	—	—	1	0.2
May	—	—	1	0.2	—	—	1	1.0	—	—	2	1.2
June	—	—	1	0.2	1	0.8	—	—	—	—	2	1.0
<b>HEALTH</b>												
1996 April	2	0.3	—	—	1	0.5	1	3.5	—	—	4	4.3
May	2	0.3	2	0.5	—	—	—	—	—	—	4	0.8
June	2	0.1	1	0.4	—	—	1	1.3	—	—	4	1.8
<b>ENTERTAINMENT AND RECREATIONAL</b>												
1996 April	3	0.3	—	—	1	0.7	—	—	—	—	4	1.0
May	3	0.2	—	—	—	—	—	—	1	7.0	4	7.2
June	4	0.4	1	0.5	1	0.5	—	—	—	—	6	1.4
<b>MISCELLANEOUS</b>												
1996 April	3	0.2	1	0.2	—	—	—	—	—	—	4	0.5
May	4	0.5	3	1.0	—	—	1	1.8	—	—	8	3.2
June	7	0.6	2	0.6	—	—	—	—	—	—	9	1.2
<b>TOTAL NON-RESIDENTIAL BUILDING</b>												
1996 April	39	3.7	20	5.3	8	5.2	7	13.3	—	—	74	27.5
May	56	5.7	18	5.3	8	5.8	5	6.2	5	120.5	92	143.6
June	56	5.0	24	8.2	8	4.9	5	8.8	—	—	93	26.9



TABLE 7. NUMBER AND VALUE OF DWELLING UNITS (a) APPROVED  
BY MATERIAL OF OUTER WALLS  
JUNE 1996

Particulars	Private sector		Public sector		Total	
	Number	Value (\$'000)	Number	Value (\$'000)	Number	Value (\$'000)
<b>ADELAIDE STATISTICAL DIVISION</b>						
Houses —						
Brick, stone or concrete	9	1,283	—	—	9	1,283
Brick-veneer	191	15,615	3	180	194	15,795
Timber	3	124	—	—	3	124
Fibre cement	1	70	—	—	1	70
Steel, aluminium or other materials	2	164	—	—	2	164
Not stated	35	3,074	—	—	35	3,074
<b>Total houses</b>	<b>241</b>	<b>20,330</b>	<b>3</b>	<b>180</b>	<b>244</b>	<b>20,510</b>
<i>Other residential buildings</i>	<i>19</i>	<i>1,132</i>	—	—	<i>19</i>	<i>1,132</i>
<b>Total residential buildings</b>	<b>260</b>	<b>21,461</b>	<b>3</b>	<b>180</b>	<b>263</b>	<b>21,641</b>
<b>REST OF SOUTH AUSTRALIA</b>						
Houses —						
Brick, stone or concrete	11	965	—	—	11	965
Brick-veneer	63	5,869	—	—	63	5,869
Timber	20	1,067	—	—	20	1,067
Fibre cement	17	921	—	—	17	921
Steel, aluminium or other materials	1	50	—	—	1	50
Not stated	50	3,485	—	—	50	3,485
<b>Total houses</b>	<b>162</b>	<b>12,357</b>	—	—	<b>162</b>	<b>12,357</b>
<i>Other residential buildings</i>	<i>6</i>	<i>311</i>	—	—	<i>6</i>	<i>311</i>
<b>Total residential buildings</b>	<b>168</b>	<b>12,668</b>	—	—	<b>168</b>	<b>12,668</b>
<b>TOTAL SOUTH AUSTRALIA</b>						
Houses —						
Brick, stone or concrete	20	2,248	—	—	20	2,248
Brick-veneer	254	21,484	3	180	257	21,664
Timber	23	1,191	—	—	23	1,191
Fibre cement	18	991	—	—	18	991
Steel, aluminium or other materials	3	214	—	—	3	214
Not stated	85	6,559	—	—	85	6,559
<b>Total houses</b>	<b>403</b>	<b>32,687</b>	<b>3</b>	<b>180</b>	<b>406</b>	<b>32,867</b>
<i>Other residential buildings</i>	<i>25</i>	<i>1,443</i>	—	—	<i>25</i>	<i>1,443</i>
<b>Total residential buildings</b>	<b>428</b>	<b>34,129</b>	<b>3</b>	<b>180</b>	<b>431</b>	<b>34,309</b>

(a) Comprises new houses and dwelling units in new other residential buildings.

TABLE 8. SUMMARY OF BUILDING APPROVED BY STATISTICAL DIVISION, JUNE 1996

Statistical division	Dwelling units in new residential buildings (a)						Alterations and additions to residential buildings (\$'000)	Non-residential building (\$'000)	Total (\$'000)
	Houses		Other residential buildings		Total				
	Number	Value (\$'000)	Number	Value (\$'000)	Number	Value (\$'000)			
<b>PRIVATE SECTOR</b>									
Adelaide	241	20,330	19	1,132	260	21,461	7,407	9,730	38,599
Outer Adelaide	90	7,223	—	—	90	7,223	769	4,840	12,833
Yorke and Lower North	20	1,363	4	220	24	1,583	258	640	2,481
Murray Lands	13	974	2	91	15	1,065	256	1,003	2,324
South East	14	1,142	—	—	14	1,142	214	180	1,537
Eyre	17	1,136	—	—	17	1,136	122	—	1,258
Northern	8	519	—	—	8	519	299	1,333	2,151
<b>South Australia</b>	<b>403</b>	<b>32,687</b>	<b>25</b>	<b>1,443</b>	<b>428</b>	<b>34,129</b>	<b>9,326</b>	<b>17,726</b>	<b>61,182</b>
<b>PUBLIC SECTOR</b>									
Adelaide	3	180	—	—	3	180	240	7,009	7,429
Outer Adelaide	—	—	—	—	—	—	—	—	—
Yorke and Lower North	—	—	—	—	—	—	—	—	—
Murray Lands	—	—	—	—	—	—	—	—	—
South East	—	—	—	—	—	—	—	—	—
Eyre	—	—	—	—	—	—	170	2,201	2,371
Northern	—	—	—	—	—	—	778	—	778
<b>South Australia</b>	<b>3</b>	<b>180</b>	<b>—</b>	<b>—</b>	<b>3</b>	<b>180</b>	<b>1,188</b>	<b>9,211</b>	<b>10,578</b>
<b>TOTAL</b>									
Adelaide	244	20,510	19	1,132	263	21,641	7,647	16,739	46,028
Outer Adelaide	90	7,223	—	—	90	7,223	769	4,840	12,833
Yorke and Lower North	20	1,363	4	220	24	1,583	258	640	2,481
Murray Lands	13	974	2	91	15	1,065	256	1,003	2,324
South East	14	1,142	—	—	14	1,142	214	180	1,537
Eyre	17	1,136	—	—	17	1,136	292	2,201	3,629
Northern	8	519	—	—	8	519	1,077	1,333	2,928
<b>South Australia</b>	<b>406</b>	<b>32,867</b>	<b>25</b>	<b>1,443</b>	<b>431</b>	<b>34,309</b>	<b>10,514</b>	<b>26,937</b>	<b>71,760</b>

(a) Excludes Conversions, etc.

TABLE 9. NEW DWELLING UNITS (a) APPROVED, BY TYPE AND STATISTICAL DIVISION, JUNE 1996

Statistical division	New other residential building									Total new residential building
	New houses	Semi-detached, row or terrace houses, townhouses, etc. of			Flats, units or apartments in a building of				Total	
		1 storey	2 or more storeys	Total	1-2 storeys	3 storeys	4 or more storeys	Total		
NUMBER OF DWELLING UNITS										
Adelaide	244	17	2	19	—	—	—	—	19	263
Outer Adelaide	90	—	—	—	—	—	—	—	—	90
Yorke and Lower North	20	—	—	—	4	—	—	4	4	24
Murray Lands	13	2	—	2	—	—	—	—	2	15
South East	14	—	—	—	—	—	—	—	—	14
Eyre	17	—	—	—	—	—	—	—	—	17
Northern	8	—	—	—	—	—	—	—	—	8
<b>South Australia</b>	<b>406</b>	<b>19</b>	<b>2</b>	<b>21</b>	<b>4</b>	<b>—</b>	<b>—</b>	<b>4</b>	<b>25</b>	<b>431</b>
VALUE (\$'000)										
Adelaide	20,510	982	150	1,132	—	—	—	—	1,132	21,641
Outer Adelaide	7,223	—	—	—	—	—	—	—	—	7,223
Yorke and Lower North	1,363	—	—	—	220	—	—	220	220	1,583
Murray Lands	974	91	—	91	—	—	—	—	91	1,065
South East	1,142	—	—	—	—	—	—	—	—	1,142
Eyre	1,136	—	—	—	—	—	—	—	—	1,136
Northern	519	—	—	—	—	—	—	—	—	519
<b>South Australia</b>	<b>32,867</b>	<b>1,073</b>	<b>150</b>	<b>1,223</b>	<b>220</b>	<b>—</b>	<b>—</b>	<b>220</b>	<b>1,443</b>	<b>34,309</b>

(a) Excludes Conversions, etc.

TABLE 10. BUILDING APPROVED BY SELECTED STATISTICAL LOCAL AREA, JUNE 1996

Statistical local area	New residential buildings (a)						Alterations and additions to residential buildings (\$'000)	Non-residential building		
	Houses			Other residential buildings				Private sector (\$'000)	Total (\$'000)	Total building (\$'000)
	Private sector (number)	Public sector (number)	Total value (\$'000)	Private sector (number)	Public sector (number)	Total value (\$'000)				
<b>ADELAIDE STATISTICAL DIVISION</b>										
Adelaide (C)	—	—	—	—	—	—	—	—	898	898
Brighton (C)	7	—	575	6	—	360	236	—	—	1,171
Burnside (C)	12	—	1,170	2	—	150	824	—	—	2,144
Campbelltown (C)	8	—	921	2	—	90	254	550	550	1,815
East Torrens (DC)	2	—	250	—	—	—	43	—	—	293
Elizabeth (C)	2	—	120	—	—	—	—	—	—	120
Enfield (C) Pt A & Pt B	17	3	1,328	—	—	—	268	785	1,190	2,786
Gawler (M)	3	—	198	—	—	—	21	—	—	219
Glenside (C)	1	—	189	—	—	—	555	55	55	799
Happy Valley (C)	17	—	1,583	—	—	—	162	—	—	1,745
Henley & Grange (C)	—	—	—	—	—	—	—	—	—	—
Hindmarsh and Woodville (C)	20	—	1,603	2	—	90	378	1,685	1,685	3,756
Kensington & Norwood (C)	—	—	—	—	—	—	252	80	80	332
Marion (C)	17	—	1,759	—	—	—	552	711	842	3,153
Mitcham (C)	6	—	616	—	—	—	667	—	374	1,657
Munno Para (C)	20	—	1,474	—	—	—	19	—	410	1,903
Noarlunga (C)	24	—	1,661	3	—	167	231	1,530	5,416	7,474
Payneham (C)	1	—	90	—	—	—	141	—	—	231
Port Adelaide (C)	3	—	330	—	—	—	58	—	95	483
Prospect (C)	1	—	110	2	—	150	100	—	—	360
St Peters (M)	1	—	120	—	—	—	313	—	—	433
Salisbury (C)	12	—	699	—	—	—	498	1,840	2,160	3,357
Stirling (DC)	5	—	595	—	—	—	40	—	—	635
Tea Tree Gully (C)	40	—	3,327	—	—	—	607	200	270	4,204
Thebarton (M)	2	—	128	—	—	—	205	1,150	1,300	1,633
Unley (C)	2	—	248	—	—	—	983	844	844	2,074
Walkerville (M)	1	—	120	—	—	—	—	—	—	120
West Torrens (C)	17	—	1,294	—	—	—	144	300	470	1,907
Willunga (DC)	—	—	—	2	—	125	100	—	100	325
Unincorporated	—	—	—	—	—	—	—	—	—	—
<b>Adelaide (SD)</b>	<b>241</b>	<b>3</b>	<b>20,510</b>	<b>19</b>	<b>—</b>	<b>1,132</b>	<b>7,647</b>	<b>9,730</b>	<b>16,739</b>	<b>46,028</b>
<b>REST OF STATE</b>										
Barossa (DC)	7	—	655	—	—	—	96	1,360	1,360	2,111
Light (DC)	6	—	596	—	—	—	46	375	375	1,017
Mallala (DC)	1	—	27	—	—	—	—	—	—	27
Mount Barker (DC)	14	—	1,077	—	—	—	106	2,000	2,000	3,183
Mount Gambier (C)	2	—	168	—	—	—	156	120	120	444
Murray Bridge (RC)	1	—	56	2	—	91	10	96	96	253
Northern Yorke Peninsula (DC)	3	—	145	—	—	—	10	450	450	605
Port Augusta (C)	3	—	197	—	—	—	53	53	53	303
Port Elliot & Goolwa (DC)	13	—	853	—	—	—	101	—	—	954
Port Lincoln (C)	9	—	601	—	—	—	150	—	—	751
Port Pirie (C)	—	—	—	—	—	—	—	—	—	—
Roxby Downs (M)	—	—	—	—	—	—	—	—	—	—
Strathalbyn (DC)	3	—	277	—	—	—	114	—	—	391
Victor Harbor (DC)	15	—	1,311	—	—	—	113	50	50	1,474
Whyalla (C)	2	—	163	—	—	—	569	800	800	1,532
Other	83	—	6,232	4	—	220	1,343	2,692	4,893	12,687
<b>Rest of State</b>	<b>162</b>	<b>—</b>	<b>12,357</b>	<b>6</b>	<b>—</b>	<b>311</b>	<b>2,867</b>	<b>7,996</b>	<b>10,198</b>	<b>25,732</b>
<b>SOUTH AUSTRALIA</b>										
<b>South Australia</b>	<b>403</b>	<b>3</b>	<b>32,867</b>	<b>25</b>	<b>—</b>	<b>1,443</b>	<b>10,514</b>	<b>17,726</b>	<b>26,937</b>	<b>71,760</b>

(a) Excludes Conversions, etc. (C) Municipality with city status. (DC) District Council. (M) Municipality. (RC) Rural City. (SD) Statistical Division.

## EXPLANATORY NOTES

### Introduction

This publication contains monthly details of building work approved.

2. For purposes of comparison, it should be noted that statistics of building approvals are affected from month to month by large projects (e.g. blocks of flats, multi-storey office buildings) approved in particular months and also by the administrative arrangements of government authorities.

### Scope and coverage

3. Statistics of building work approved are compiled from:

- (a) permits issued by local authorities in areas subject to building control by those authorities; and
- (b) contracts let or day labour work authorised by Commonwealth, State, semi-government and local government authorities;
- (c) major building activity which takes place in areas not subject to the normal administrative approval processes (e.g. buildings on remote mine sites).

4. The statistics relate to building activity which includes construction of new buildings, and alterations and additions to existing buildings. Construction activity not defined as building (e.g. construction of roads, bridges, railways, earthworks etc.) is excluded from this publication, but can be found in the ABS publication *Engineering Construction Survey* (8762.0).

5. In relation to work carried out on existing buildings, the statistics include details of non-structural renovation and refurbishment work and the installation of integral building fixtures for which building approval was obtained.

6. From July 1990, the statistics cover:

- (a) all approved new residential building jobs valued at \$10,000 or more (previously \$5,000 or more)
- (b) approved alterations and additions to residential buildings valued at \$10,000 or more
- (c) all approved non-residential building jobs valued at \$50,000 or more (previously \$30,000 or more).

These changes in coverage do not have a statistically significant effect on broad building approvals aggregate data. However, care should be taken in interpreting data for specific classes of non-residential building.

### Definitions

7. A *building* is defined as a rigid, fixed and permanent structure which has a roof. Its intended purpose is primarily to house people, plant, machinery, vehicles, goods or livestock. An integral feature of a building's design to satisfy its intended use, is the provision for regular access by persons.

8. A *dwelling unit* is defined as a self-contained suite of rooms, including cooking and bathing facilities and intended for long term residential use. Units (whether self-contained or not) within buildings offering institutional care such as hospitals or temporary accommodation, such as motels, hostels and holiday apartments are not defined as dwelling units. The value of units of this type is included in the appropriate category of non-residential buildings' approved.

9. A *residential building* is defined as a building predominantly consisting of one or more dwelling units. Residential buildings can be either houses or other residential buildings.

(a) A *house* is defined as a detached building predominantly used for long term residential purposes and consisting of only one dwelling unit. Thus detached granny flats and detached dwelling units such as caretaker's residences associated with non-residential buildings are defined as houses for the purpose of these statistics.

(b) An *other residential building* is defined as a building which is predominantly used for long term residential purposes and which contains (or has attached to it) more than one dwelling unit (e.g. includes townhouses, duplexes, apartment buildings etc.).

10. From the January 1995 issue of this publication, the number of dwelling units approved as part of alterations and additions to or conversions of existing residential or non-residential buildings and as part of the construction of non-residential building is shown separately in Table 1 under the heading of 'Conversions, etc.', and is included in the total number of dwelling units shown in the table. Previously, such dwellings were only included as a footnote.

11. In addition, from the January 1995 issue, the seasonally adjusted and trend estimates for the number of dwelling units approved, shown in Table 3, include these conversions, etc. Previously, only dwelling units approved as part of the construction of new residential buildings were included in these estimates.

12. The value of new residential building approved continues to exclude the value of dwelling units approved as part of alterations and additions to or conversions of existing residential or non-residential building. Approved building work represented by these conversions, etc. jobs continues to be included in the value of alterations and additions to residential buildings or in the value of non-residential building as appropriate.

13. Value data are derived by aggregation of the estimated value (when completed) of building work (excluding value of land and landscaping but including site preparation) as reported on approval documents. For 'houses', these estimates are usually a reliable indicator of the completed value of the building. However, for 'other residential buildings' and 'non-residential buildings' these estimates can differ significantly from the completed value of the building.

### Building classification

14. *Ownership of a building* is classified as either Public Sector or Private Sector according to the sector of the intended owner of the completed building as evident at the time of approval. Residential buildings being constructed by private sector builders under government housing authority schemes whereby the authority has contracted, or intends to contract, to purchase the buildings on or before completion, are classified as public sector.

15. *Functional classification of buildings*: a building is classified according to its intended major function. Hence a building which is ancillary to other buildings or forms a part of a group of related buildings is classified to the function of the building and not to the function of the group as a whole. An example of this can be seen in the treatment of building work approved for a factory complex. In this case a detached administration building would be classified to Offices, a detached cafeteria building to Shops, while factory buildings

would be classified to Factories. An exception to this rule is the treatment of group accommodation buildings e.g. a student accommodation building on a university campus would be classified to Educational.

### Seasonal adjustment

16. Seasonal adjustment is a means of removing the estimated effects of normal seasonal variation from the series so that the effects of other influences on the series may be more clearly recognised.

17. Table 3 shows seasonally adjusted estimates for both private and total dwellings. For the four series shown, account has been taken of normal seasonal factors and 'trading day' effects (arising from the varying numbers of Sundays, Mondays, Tuesdays etc. in the month) and the effect of movement in the date of Easter which may, in successive years, affect figures for different months.

18. Seasonal adjustment procedures do not aim to remove the irregular or non-seasonal influences which may be present in any particular month, such as the effect of the approval of large projects or as a consequence of the administrative arrangements of approving authorities. These irregular influences that are highly volatile can make it difficult to interpret the movement of the series even after adjustment for seasonal variation.

19. Most of the component series have been seasonally adjusted independently. Therefore, the adjusted components may not add to the adjusted totals. Further, the difference between independently seasonally adjusted series does not necessarily produce series which are optimum or even adequate adjustments of the similarly derived original series. Thus the figures which can be derived by subtracting seasonally adjusted private sector dwelling units from the seasonally adjusted total should not be used to represent seasonally adjusted public sector dwelling units.

20. As happens with all seasonally adjusted series, the seasonal factors are reviewed annually to take account of each additional year's data. For Building Approvals, the results of the latest review are shown in the July issue each year. Further information about seasonal adjustment can be obtained from the Assistant Director of Time Series Analysis, Canberra, on (06) 252 6345.

### Trend estimates

21. Seasonally adjusted series can be smoothed to reduce the impact of the irregular component in the adjusted series. This smoothed seasonally adjusted series is called a trend estimate.

22. Table 3 shows trend estimates for both private and total dwellings. These are obtained by applying a 13-term Henderson-weighted moving average to all months of the respective seasonally adjusted series except the last six months. Trend series are created for the last six months by applying surrogates of the Henderson moving average to the seasonally adjusted time series. For further information, see *A Guide to Interpreting Time Series - Monitoring 'Trends': an Overview* (1348.0).

23. While the smoothing technique described in paragraphs 21 and 22 enables trend estimates to be produced for the latest few months, it does result in revisions to the trend estimates as new data become available. Generally, revisions become smaller over time and after three months, usually have a negligible impact on the series. Revisions to the original data and re-analysis of seasonal factors may also lead to revisions to the trend.

### Estimates at constant prices

24. Estimates of the quarterly value of building approvals at average 1989-90 prices are presented in Table 4. (Note: monthly value data at constant prices are not available.)

25. Constant price estimates measure changes in value after the direct effects of price changes have been eliminated. The deflators used to revalue the current price estimates are derived from the same price data underlying the deflators compiled for the dwelling and non-dwelling construction components of the national accounts aggregate 'Gross fixed capital expenditure'.

26. Estimates at constant prices are subject to a number of approximations and assumptions. Further information on the nature and concepts of constant price estimates is contained in Chapter 4 of *Australian National Accounts: Concepts, Sources and Methods* (5216.0).

### Australian Standard Geographical Classification (ASGC)

27. Area statistics are now being classified to the *Australian Standard Geographical Classification, Edition 2.5* (1216.0) and ASGC terminology has been adopted in the presentation of building statistics.

### Unpublished data and related publications

28. The ABS can also make available certain building approvals data which are not published. Where it is not practicable to provide the required information by telephone, data can be provided in the following forms: microfiche, photocopy, computer printout and clerically extracted tabulation. A charge may be made for providing unpublished information in these forms.

29. Other ABS publications which may be of interest include:

*Building Approvals, Australia* (8731.0) - issued monthly  
*Dwelling Unit Commencements Reported by Approving Authorities, South Australia* (8741.4) - issued monthly  
*Building Activity, Australia: Dwelling Unit Commencements, Preliminary* (8750.0) - issued quarterly  
*Building Activity, South Australia* (8752.4) - issued quarterly

30. Current publications produced by the ABS are listed in the *Catalogue of Publications and Products, Australia* (1101.0). The ABS also issues, on Tuesdays and Fridays, a *Release Advice* (1105.0) which lists publications to be released in the next few days. The Catalogue and Release Advice are available from any ABS office.

### Symbols and other usages

— nil or rounded to zero  
 r figure or series revised since previous issue  
 n.a. not available

31. Where figures have been rounded, discrepancies may occur between sums of the component items and totals.

P.M. GARDNER  
 Deputy Commonwealth Statistician  
 and Government Statist



## ***For more information ...***

The ABS publishes a wide range of statistics and other information on Australia's economic and social conditions. Details of what is available in various publications and other products can be found in the ABS Catalogue of Publications and Products available at all ABS Offices.

### **ABS Products and Services**

Many standard products are available from ABS bookshops located in each State and Territory. In addition to these products, information tailored to the needs of clients can be obtained on a wide range of media by contacting your nearest ABS Office. The ABS also provides a Subscription Service for standard products and some tailored information services.

### **National *Dial-a-Statistic* Line**

**0055 86 400**

*Steadycom P/L: premium rate 25c/21.4 secs.*

This number gives you 24-hour access, 365 days a year for a range of important economic statistics including the CPI.

### **Internet**

<http://www.statistics.gov.au>

A wide range of ABS information is available via the Internet, with basic statistics available for each State, Territory and Australia. We also have Key National Indicators, ABS product release details and other information of general interest.

### ***Sales and Inquiries***

Keylink	STAT.INFO/ABS
X.400	(C:Australia,PUB:Telememo,O:ABS,FN:STAT,SN:INFO)
Internet	stat.info@abs.telememo.au

National Mail Order Service	(06) 252 5249
Subscription Service	1800 02 0608

	<b>Information Inquiries</b>	<b>Bookshop Sales</b>
SYDNEY	(02) 268 4611	268 4620
MELBOURNE	(03) 9615 7755	9615 7755
BRISBANE	(07) 3222 6351	3222 6350
PERTH	(09) 360 5140	360 5307
ADELAIDE	(08) 237 7100	237 7582
CANBERRA	(06) 252 6627	207 0326
HOBART	(002) 205 800	205 800
DARWIN	(089) 432 111	432 111



Client Services, ABS, PO Box 10, Belconnen ACT 2616

Produced by the Australian Government Publishing Service  
© Commonwealth of Australia 1996

Recommended retail price: \$13.50



2873140006960

ISSN 0810-4743